



**Precision Medical Devices  
For Better Lives.**

# Products Range

## Infusion Therapy

- Safety I.V. Cannula
- I.V. Cannula
- Three Way Stop Cock
- Three Way stop cock with Extension Tube
- Endotracheal Tube
- Foley Catheter

## “Innovation at the Heart of Healthcare”



“**SYSMED TECHNOLOGIES** is among the few medical disposable companies to have **automatic computerised vision inspection system** set up for entire manufacturing facility. Each finished device is inspected against a master by high resolution cameras. This along with our fully automatic production assembly lines and well equipped state-of-the-art R & D capability gives us the confidence to guarantee an unbeatable quality.”

- Needle Orientation
- Needle Tip Damage
- Trim Distance
- Catheter Tipping Quality
- Needle and Catheter Length Variation
- Needle Burr

**Zero Manual Error**

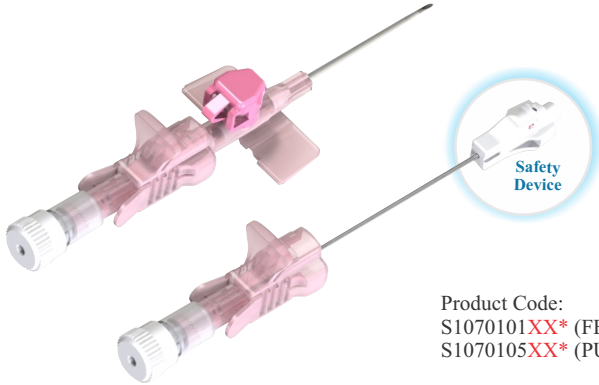
**Minimal Bio-Burden**

**Consistent Quality at all Levels**

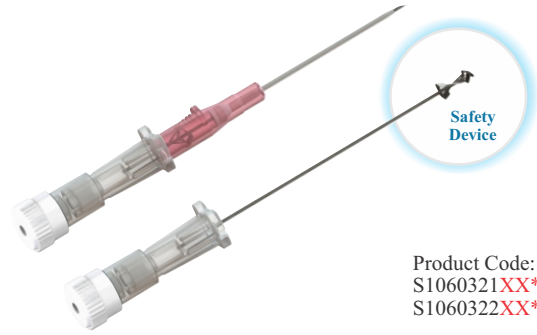
## Technical Specifications

Size	Colour Code	Ext. Dia. mm	Catheter Length mm	Flow Rate ml./min
14G	Orange	2.1	45	300
16G	Grey	1.7	45	200
17G	White	1.5	45	140
18G	Green	1.3	45	95
18G	Green	1.3	32	95
20G	Pink	1.1	32	62
22G	Blue	0.9	25	33
24G	Yellow	0.7	19	20
26G	Violet	0.6	19	15

# Infusion Therapy



Product Code:  
S1070101XX\* (FEP R/O, MGP)  
S1070105XX\* (PUR R/O, MGP)



Product Code:  
S1060321XX\* (PUR R/O, MGP)  
S1060322XX\* (FEP R/O, MGP)

## SysSafe

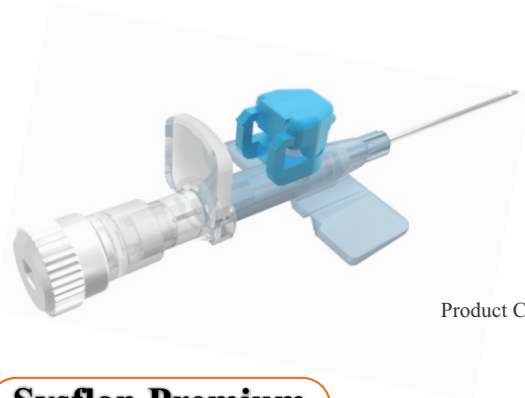
### Safety I.V. Cannula with Injection Port & Wings

- Added safety feature for prevention of needle stick injury
- Irreversible activation of safety mechanism
- Colour wings body
- Available in PUR/FEP variants
- Available in MGP packing
- Sizes: 14G to 26G

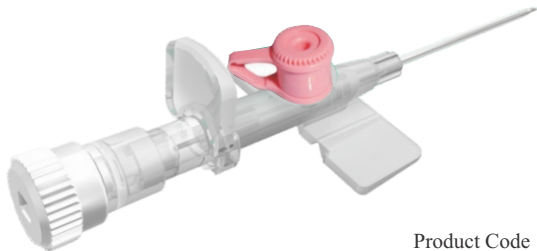
## Syswin Safe

### Safety I.V. Cannula without Injection Port & Wings

- Added safety feature for prevention of needle stick injury
- Irreversible activation of safety mechanism
- Colour body
- Available in PUR/FEP variants
- Available in MGP packing
- Sizes: 14G to 26G



Product Code :S01702XXXX\*



Product Code : S01101XXXX\*

## Sysflon Premium

### I.V. Cannula with Flip Top Injection Port Cap & Color Wings

- Injection port with one way silicon injection valve
- 6% luer taper for compatibility with all standard devices
- Available in PUR/FEP variants
- Available in MGP packing
- Sizes: 14G to 26G

## Sysflon

### I.V. Cannula with Injection Port & Wings

- Injection port with one way silicon injection valve
- 6% luer taper for compatibility with all standard devices
- Available in PUR/FEP variants
- Available in MGP packing
- Sizes: 14G to 26G

## Syscath

### I.V. Cannula with Integrated Three Way Stop Cock

- Colour wing body
- 360° rotation of the tap without limitation
- Available in PUR/FEP variants
- Sizes: 14G to 26G



Product Code : S01504XXXX\*

# Infusion Therapy



Product Code : S01607XXXX\*



Product Code : S0160828XX\*

## Syswin

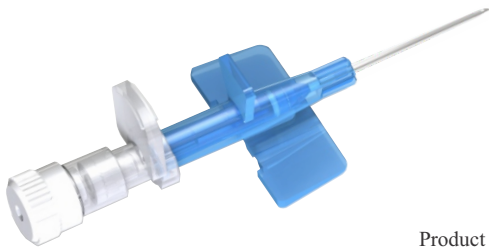
### I.V. Cannula without Injection Port & Wings

- Colour body
- Main body specially designed with projection for low point gap to facilitate better maneuvering
- Available in PUR/FEP variants
- Available in MGP packing
- Sizes : 14G to 26G

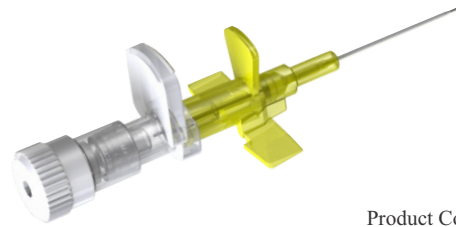
## Syspen

### I.V. Cannula without Injection Port & Wings (Pen Type)

- Colour body & Cap
- Main body specially designed with projection for low point gap to facilitate better maneuvering
- Available in PUR/FEP variants
- Available in MGP packing
- Sizes : 14G to 26G



Product Code : S01203XXXX\*



Product Code : S01405XXXX\*

## Syscan

### I.V. Cannula without Injection Port & With Wings

- Colour wing body
- Main body specially designed with projection for low point gap to facilitate better maneuvering
- Available in PUR/FEP variants
- Available in MGP packing
- Sizes : 14G to 26G

## Sysneo

### I.V. Cannula without Injection Port & With Small Wings

- Colour wing body
- Main body specially designed with projection for low point gap to facilitate better maneuvering
- Available in PUR/FEP variants
- Available in MGP packing
- Sizes : 24G & 26G



Product Code :  
S0310101XX



\*XX=   
01-Blue  
02-Red  
03-White

Product Code :  
S0210101XX\*  
S0220101XX\* (Lipid Resistant)

## Sysway Extn.

### Three Way Stop Cock with Extension Tube

- Three Way Stop Cock at one end & male luer lock at the other end of extension tube.
- High quality kink resistant tube that provides smooth flow. Universal 6% taper to make it compatible with wide range of other medical equipment.
- Arrow symbols to indicate the direction of flow.
- Minimum priming volume required for correct drug administration.
- The integrated 3-Way stop cock offers multiple infusion line.
- Tube length available (cm): 10, 25, 50, 80, 100, 150, 200

## Sysway

### Three Way Stop Cock

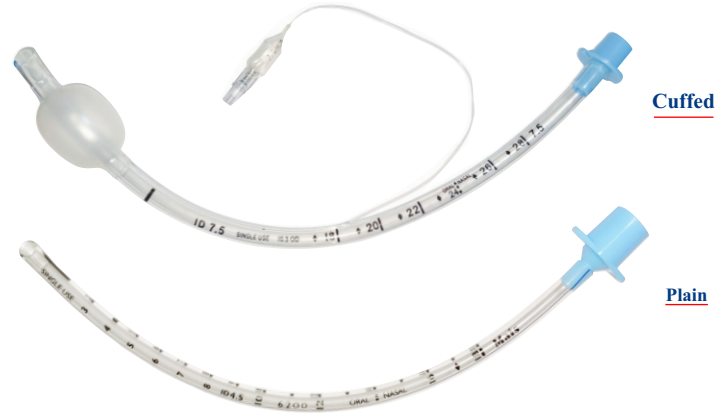
- Pressure handling capability : up to 10 bar
- Universal 6% taper to make it compatible with wide range of other medical equipment.
- Arrow indication mark on handle to indicate the direction of flow.
- Design with minimum priming volume to ensure correct drug administration.
- Available in Lipid Resistant / Non Lipid resistant.
- Available : Blue, Red & White



# Anaesthesia & Respiratory Care

## Endotracheal Tube (Plain/Cuffed)

- Made from non-toxic, clear, transparent, thermoresistant medical grade PVC (Polyvinyl Chloride).
- High volume, low pressure, evenly shaped cuff with a pilot balloon integrated to the tube for secure positioning inside the trachea
- Fitted with standard 15 mm connector for attachments to all standard ventilatory circuits in operation theaters or intensive care units.
- Graduated markings to display distance from the tip.
- Well marked to indicate the internal/external diameter.
- Nasoral tip suitable for both nasal and oral intubation.
- Full length radio-opaque lines to assess position of the tube radiographically.
- Murphy's eye near the tip to circumvent any obstruction.

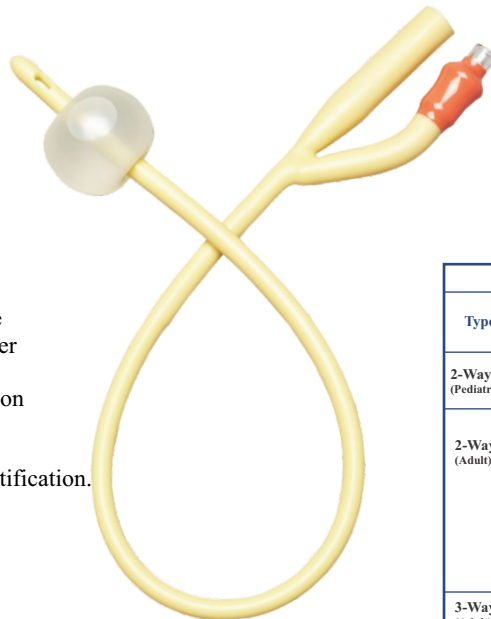


Product Ref. No.					
Size	Plaine	Cuffed	Size	Plaine	Cuffed
2.0	M091000100	-	6.5	M091000109	M090000109
2.5	M091000101	-	7.0	M091000110	M090000110
3.0	M091000102	-	7.5	M091000111	M090000111
3.5	M091000103	M090000103	8.0	M091000112	M090000112
4.0	M091000104	M090000104	8.5	M091000113	M090000113
4.5	M091000105	M090000105	9.0	M091000114	M090000114
5.0	M091000106	M090000106	9.5	M091000115	M090000115
5.5	M091000107	M090000107	10.0	M091000116	M090000116
6.0	M091000108	M090000108			

## Urology

### Foley Catheter

- Used for short/long term urine drainage
- Made up of latex bonded with silicone elastomer which eliminates the risk of encrustation
- Distal end is coned, smooth, and burr free eyes for a traumatic intubation.
- Provided with symmetrical large capacity balloon that ensures straight tip for proper urine flow and good sphincter action, preventing bladder leakage.
- High strength polymer layer in the middle of the catheter ensures wider inner diameter and hence high flow rate
- Smooth eye, ultra thin highly elastic balloon and hard non-return valve for trouble free inflation and deflation
- Valve is colour coded for instant size identification.



Specifications							
Type	Ch/FR	Colour	Outer Dia (mm) ±0.33mm	Capacity of balloon (ml)	Total Length (mm) Minimum	Flow Rate (ml/min.) Minimum	Product Ref. No.
2-Way (Pediatrics)	6	Blue	2.0	1.5-3	220	10	Y031030106
	8	Black	2.7	3-5	220	15	Y031030108
	10	Grey	3.3		220	30	Y031030110
2-Way (Adult)	12	White	4.0	5-15	360	50	Y031030112
	14	Green	4.7	15-30	360	70	Y031030114
	16	Orange	5.3		360	100	Y031030116
	18	Red	6.0		360	100	Y031030118
	20	Yellow	6.7		360	100	Y031030120
	22	Purple	7.3		360	100	Y031030122
	24	Sky Blue	8.0		360	100	Y031030124
	26	Pink	8.7		360	100	Y031030126
	28	Brown	9.7		360	100	Y031030128
	30	Grey	10		360	100	Y031030130
3-Way (Adult)	16	Orange	5.3	30-50	360	100	Y032030116
	18	Red	6.0		360	100	Y032030118
	20	Yellow	6.7		360	100	Y032030120
	22	Purple	7.3		360	100	Y032030122
	24	Sky Blue	8.0		360	100	Y032030124
	26	Pink	8.7		360	100	Y032030126
	28	Brown	9.7		360	100	Y032030128
	30	Grey	10		360	100	Y032030130

# **SYSMED**

## TECHNOLOGIES



### **SYSMED TECHNOLOGIES**

525 P, Sector-37, Pace City-II, Gurgaon-122001 (Haryana), India

Mob.: +91 8448822362 / Email.: [info@sysmedtech.in](mailto:info@sysmedtech.in)

---

[www.sysmedtech.in](http://www.sysmedtech.in)